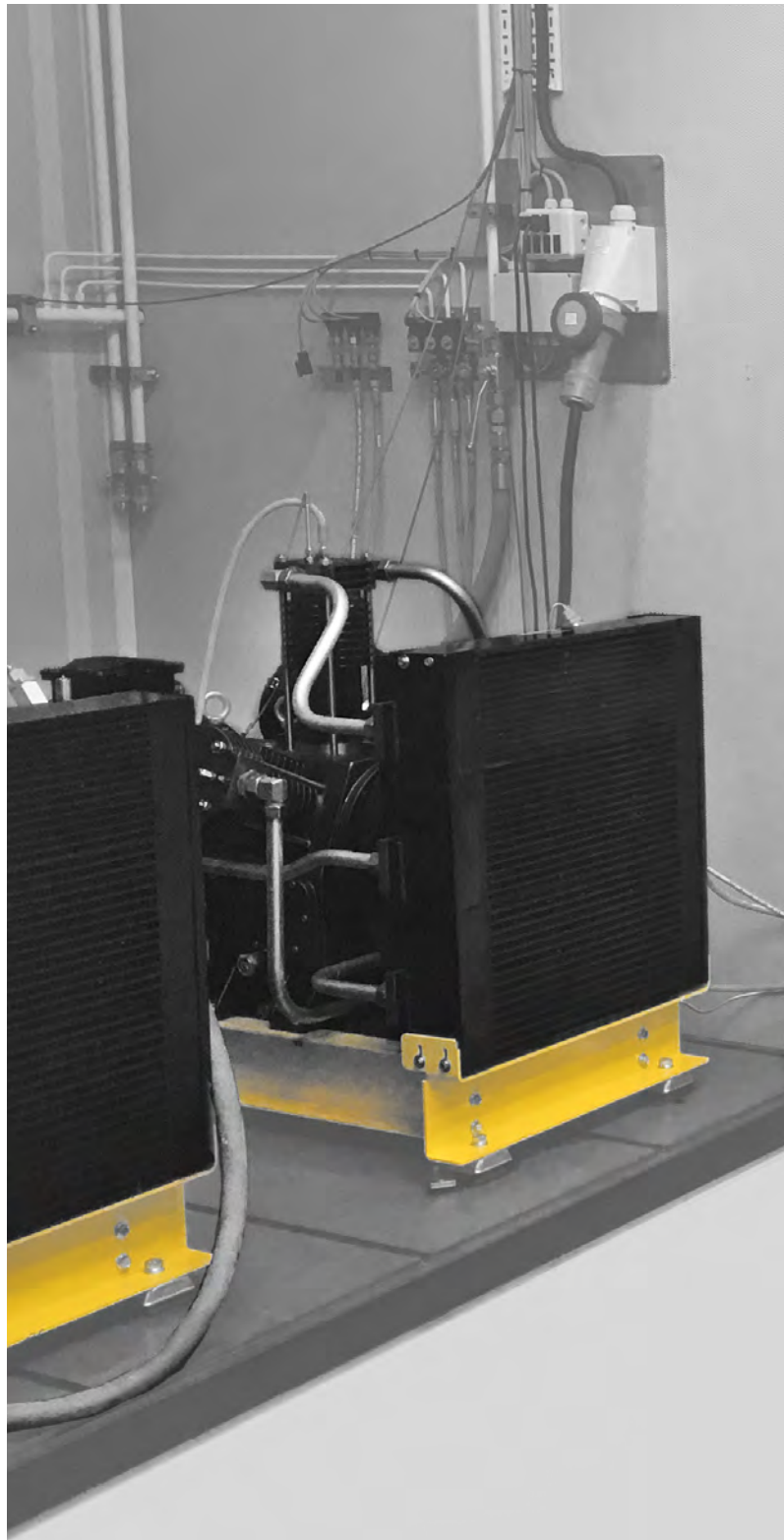




MARINE
AIR COMPRESSORS
& N₂ GENERATORS

Tailor-made is our standard



ABOUT US

Deno Compressors is an original equipment manufacturer of air compressors and a specialist in the field of marine applications for compressed air systems.

Our compressors have been designed and constructed since 1918 and thousands of compressor systems have been installed since then. Deno Compressors is an ISO 9001:2015, ISO 14001:2015 and ISO 45001:2018 certified company.

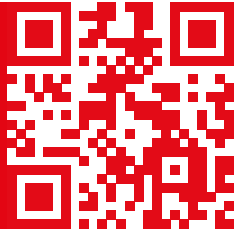
Deno compressor systems can be delivered custom made as a package creating an opportunity for saving space, time and installation costs.

Deno starting air compressors have type approval of major classification societies. Inspection certificates for individual compressors are issued upon request.

We are represented in more than 30 countries and have regional operating service engineers. An adequate stock of all components is maintained for all types, at all times.

INTERACTIVE PAGE OVERVIEW

VISIT OUR WEBSITE



04

Air-Cooled Starting Air

The DENO 2L, 3L, L3 & L4 series are multi-stage, direct-driven, piston-type starting air compressors.

05

Water-Cooled Starting Air

The DENO 2K & 3K series are multi-stage, direct-driven, piston-type starting air compressors.

06

Rotary Screw Compressors

The DENO DSR & DSD series are belt-driven and direct-driven, rotary screw compressors.

08

Emergency Air Package

We have a range of emergency starting air compressors without any electrical power source.

09

Service Air Package

The DENO DPA series are air cooled, belt-driven, piston-type service air compressors.

10

Air Dryers

DENO Refrigeration and Adsorption Air Dryers.

12

Nitrogen Generators

The DENO Nitrogen Generators are based on membrane and PSA technology.

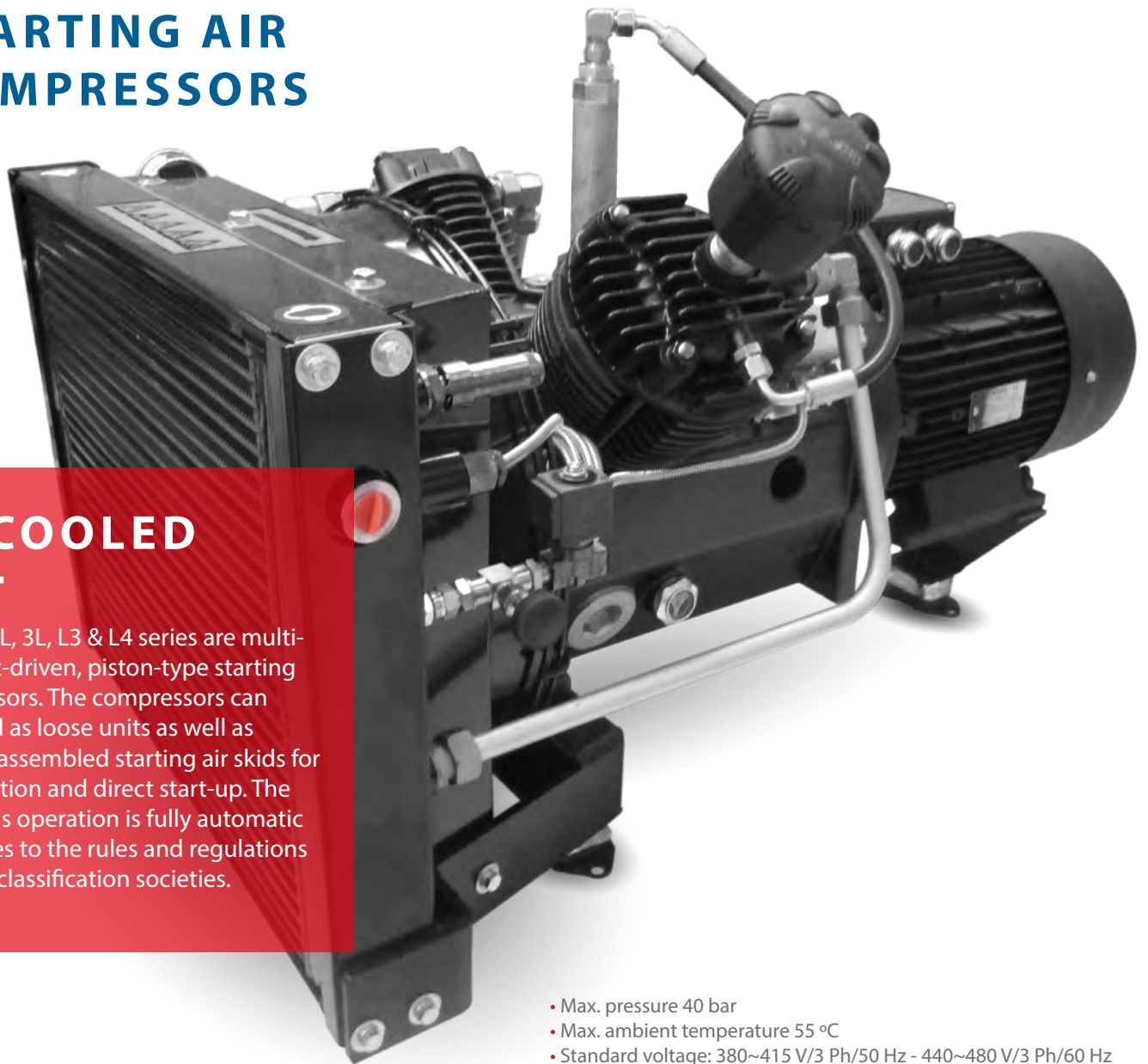
14

Skids & Auxiliaries

The DENO Skids and Auxiliaries are available in a wide range of standard units as well as custom-build packages.

DENO

STARTING AIR COMPRESSORS



AIR-COOLED

The DENO 2L, 3L, L3 & L4 series are multi-stage, direct-driven, piston-type starting air compressors. The compressors can be delivered as loose units as well as completely assembled starting air skirts for easy installation and direct start-up. The compressor's operation is fully automatic and complies to the rules and regulations of all major classification societies.

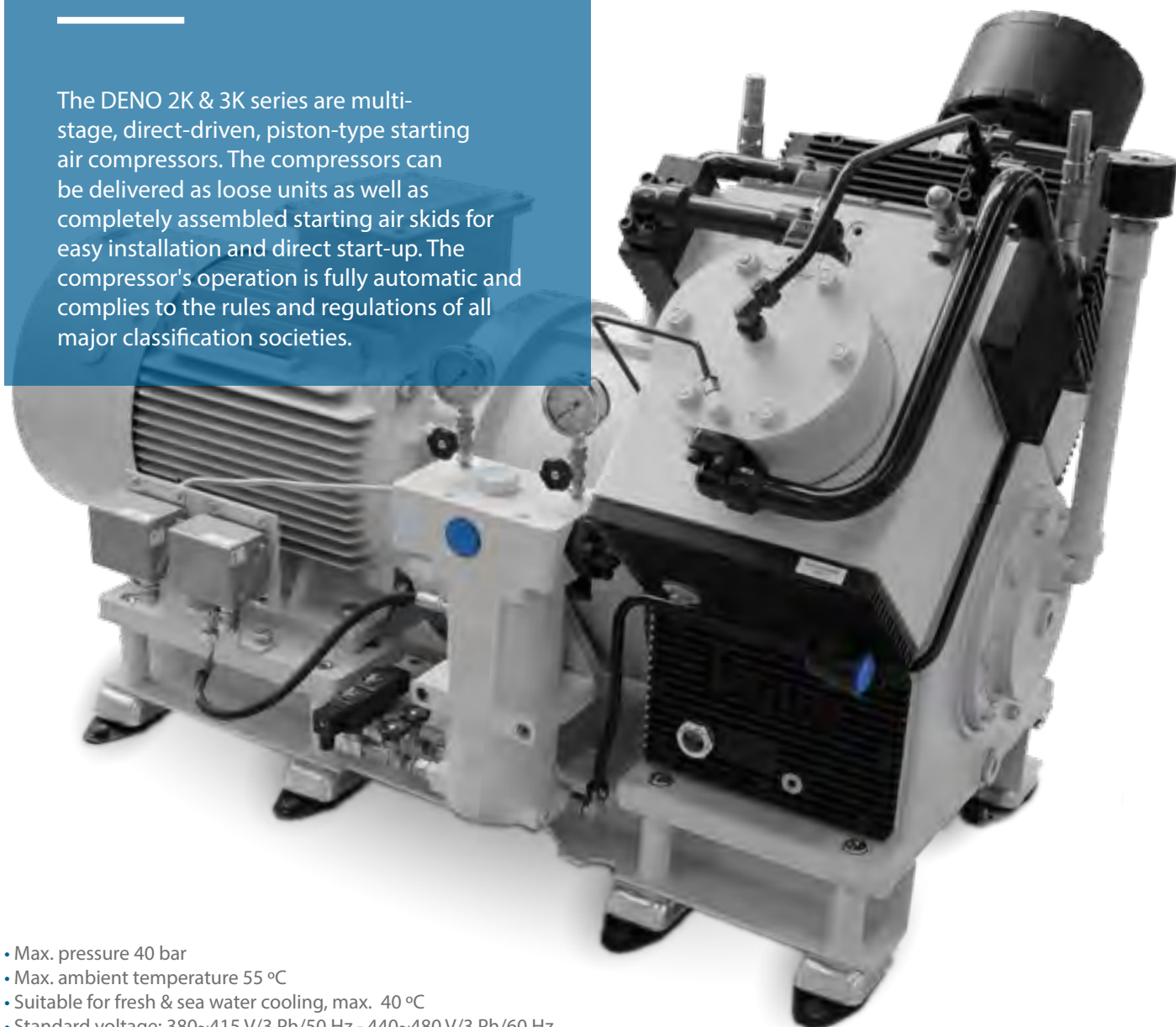
- Max. pressure 40 bar
- Max. ambient temperature 55 °C
- Standard voltage: 380~415 V/3 Ph/50 Hz - 440~480 V/3 Ph/60 Hz
- Deviating voltages and pressures upon request

Model	Qty Cyl./ Stages	50 Hz				60 Hz			
		950 RPM		1450 RPM		1150 RPM		1750 RPM	
		Capacity m ³ /hr	Required Power kW	Capacity m ³ /hr	Required Power kW	Capacity m ³ /hr	Required Power kW	Capacity m ³ /hr	Required Power kW
2L-15	2/2	10	1,9	15	2,9	12	2,4	18	3,4
2L-25	2/2	16	3,3	25	5,2	20	4,2	30	6,1
2L-35	2/2	23	4,9	35	7,2	28	5,9	42	8,3
3L-42	3/2	27	5,4	42	7,4	33	6,5	51	8,6
3L-60	3/2	41	6,4	63	9,7	50	7,7	76	11,7
L3-75	3/3	50	9,7	75	14,8	60	11,7	N/A	N/A
L3-100	3/3	66	12,2	100	18,5	85	14,7	N/A	N/A
L4-150	4/3	100	19,5	150	29,0	120	24,0	180	34,0
L4-200	4/3	131	26,0	200	38,5	160	31,0	240	45,0

Rated details at 30 bar, nominal conditions: 20 °C & 1013 mbar

WATER-COOLED

The DENO 2K & 3K series are multi-stage, direct-driven, piston-type starting air compressors. The compressors can be delivered as loose units as well as completely assembled starting air skirts for easy installation and direct start-up. The compressor's operation is fully automatic and complies to the rules and regulations of all major classification societies.



- Max. pressure 40 bar
- Max. ambient temperature 55 °C
- Suitable for fresh & sea water cooling, max. 40 °C
- Standard voltage: 380~415 V/3 Ph/50 Hz - 440~480 V/3 Ph/60 Hz
- Deviating voltages and pressures upon request

Model	Qty Cyl./ Stages	50 Hz				60 Hz			
		950 RPM		1450 RPM		1150 RPM		1750 RPM	
		Capacity m ³ /hr	Required Power kW	Capacity m ³ /hr	Required Power kW	Capacity m ³ /hr	Required Power kW	Capacity m ³ /hr	Required Power kW
2K25	2/2	16	3,3	25	5,2	20	4,2	30	6,1
2K35	2/2	23	4,9	35	7,2	28	5,9	42	8,3
3K56	3/2	39	7,6	60	11,5	47	9,4	72	13,8
2K95	2/2	61	10,6	93	16,2	74	12,9	112	19,6
2K125	2/2	82	14,3	125	21,8	99	17,3	151	26,3
2K155	2/2	102	18,4	155	28,0	123	22,2	187	33,8
2K170	2/2	111	20,9	170	31,9	135	25,3	205	38,5

Rated details at 30 bar, nominal conditions: 20 °C & 1013 mbar

DENO ROTARY SCREW COMPRESSORS

BELT-DRIVEN

The DENO DSR series 3 up to 55 are belt-driven rotary-screw compressors. The compressors are delivered with a sound-reducing enclosure with quick release panels and/or hinged doors enabling easy inspection and maintenance. The compressor's operation is fully automated by a sophisticated and user-friendly digital controller.



- Max. ambient temperature 55 °C
- Standard air cooled, fresh & sea water cooled is optional
- Standard voltage: 380~415 V/3 Ph/50 Hz - 440~480 V/3 Ph/60 Hz
- Deviating voltages and pressures upon request

Model	Pressure bar	50 Hz			60 Hz			Length mm	Width mm	Height mm	Weight kg
		Capacity		Motor power kW	Capacity		Motor power kW				
		m ³ /min	m ³ /hr		m ³ /min	m ³ /hr					
DSR3	8	0,47	28	3,0	0,53	32	3,5	1000	450	935	160
	10	0,43	26		0,49	29					
	13	0,38	23		0,43	26					
DSR4	8	0,65	39	4,0	0,74	44	4,7	1000	450	935	165
	10	0,58	35		0,66	40					
	13	0,45	27		0,51	31					
DSR5	8	0,79	47	5,5	0,90	54	6,4	900	650	1380	250
	10	0,70	42		0,80	48					
	13	0,55	33		0,63	38					
DSR7	8	1,20	72	7,5	1,37	82	8,8	900	650	1380	270
	10	1,00	60		1,14	68					
	13	0,80	48		0,91	55					
DSR11	8	1,70	102	11,0	1,93	116	12,9	900	650	1380	295
	10	1,50	90		1,71	102					
	13	1,30	78		1,48	89					
DSR15	8	2,20	150	15,0	2,50	165	17,6	1070	690	1450	380
	10	2,00	120		2,28	137					
	13	1,70	102		1,93	116					
DSR18	8	3,10	186	18,5	3,53	212	21,7	1070	690	1450	395
	10	2,70	162		3,07	184					
	13	2,10	126		2,39	143					
DSR22	8	3,60	216	22,0	4,10	246	25,8	1070	690	1450	455
	10	3,20	192		3,64	218					
	13	2,70	162		3,07	184					
DSR30	8	4,70	282	30,0	5,35	321	35,2	1170	1000	1470	675
	10	4,40	264		5,01	300					
	13	3,80	228		4,32	259					
DSR37	8	5,70	342	37,0	6,49	389	43,4	1170	1000	1470	710
	10	5,20	312		5,92	355					
	13	4,30	258		4,89	294					
DSR45	8	7,30	438	45,0	8,31	498	52,8	1350	1060	1570	990
	10	6,30	378		7,17	430					
	13	5,60	336		6,37	382					
DSR55	8	8,33	500	55,0	9,44	567	65,0	1350	1060	1570	1075
	10	7,70	462		8,76	526					
	13	6,50	390		7,40	444					

Rated details at nominal conditions: 20 °C & 1013 mbar



DIRECT-DRIVEN

The DENO DSD series 45 up to 315 are direct-driven rotary-screw compressors. The compressors can be delivered as standard units or as custom-build packages with integrated water separators, filters and air dryers, minimizing installation space. The compressor's operation is fully automated by a sophisticated and user-friendly digital controller.

- Max. ambient temperature 55 °C
- Available with air, fresh & sea water cooling
- Standard voltage: 380~415 V/3 Ph/50 Hz - 440~480 V/3 Ph/60 Hz
- Deviating voltages and pressures upon request

Model	Pressure bar	50 Hz			60 Hz			Length mm	Width mm	Height mm	Weight kg
		Capacity		Motor power kW	Capacity		Motor power kW				
		m ³ /min	m ³ /hr		m ³ /min	m ³ /hr					
DSD45	8	7,30	438	45	8,31	498	53	2350	1150	1650	1550
	10	6,30	378		7,17	430					
	13	5,60	336		6,37	382					
DSD55	8	8,30	498	55	9,44	567	65	2350	1150	1650	1625
	10	7,70	462		8,76	526					
	13	6,50	390		7,40	444					
DSD75	8	13,10	786	75	14,91	894	85	2350	1150	1800	1825
	10	11,40	684		12,97	778					
	13	9,80	588		11,15	669					
DSD90	8	15,70	942	90	17,87	1072	104	2350	1150	1800	1975
	10	13,70	822		15,59	935					
	13	12,00	720		13,66	819					
DSD110	6	20,90	1254	110	23,78	1427	127	2950	1150	1800	2275
	8	19,40	1164		22,08	1325					
	10	17,00	1020		19,34	1161					
	13	14,40	864		16,39	983					
DSD132	6	24,80	1488	132	28,22	1693	152	2950	1150	1800	2450
	8	23,30	1398		26,51	1591					
	10	20,10	1206		22,87	1372					
	13	17,10	1026		19,46	1168					
DSD160	6	29,10	1746	160	33,11	1987	184	2950	1150	1800	2625
	8	27,90	1674		31,75	1905					
	10	25,10	1506		28,56	1714					
	13	21,70	1302		24,69	1482					
DSD200	6	34,00	2040	200	38,69	2321	230	2950	1450	2250	2875
	8	32,00	1920		36,41	2185					
	10	30,00	1800		34,14	2048					
	13	24,00	1440		27,31	1639					
DSD250	6	42,50	2730	250	51,78	3107	288	2950	1450	2250	3125
	8	43,60	2616		49,61	2977					
	10	39,20	2352		44,61	2676					
	13	33,90	2034		38,58	2315					
DSD315	6	57,30	3438	315	65,20	3912	363	2950	1450	2250	3350
	8	54,90	3294		62,47	3748					
	10	49,40	2964		56,21	3373					
	13	42,70	2562		48,59	2915					

Rated details at nominal conditions: 20 °C & 1013 mbar

DENO EMERGENCY AIR PACKAGE

STARTING AIR

Deno Compressors has developed a range of emergency starting air compressors which provide starting air up to 40 bar without the use of any electrical power source. This range contains a manually operated starting air compressor which is optionally delivered on top of a 30L air receiver and a series of diesel-driven starting air compressors.



- Independent starting air system
- Max. pressure 40 bar
- Max. ambient temperature 55 °C
- Manually or battery started
- Fully automatic start/stop is optional
- Higher capacities upon request

Model	Qty Cyl./ Stages	Drive type	Capacity with 60 strokes per minute		Air Receiver		Length mm	Width mm	Height mm	Weight kg
			m ³ /hr	L/min	Volume Liter	Pressure Bar				
T8	2/2	Manual	1,8	30	Without		500	200	1200	25
T8-30	2/2	Manual	1,8	30	30	30	800	300	1650	65

Model	Qty Cyl./ Stages	Diesel motor Brand/Type	1500 RPM		1800 RPM		Length mm	Width mm	Height mm	Weight kg
			Capacity m ³ /hr	Required Power kW	Capacity m ³ /hr	Required Power kW				
2L-15HD	2/2	Hatz/1D81	15	4,5	18	6,6	1000	640	890	335
2L-25HD	2/2	Hatz/1D81	25	4,5	30	6,6	1000	640	890	340
2L-35HD	2/2	Hatz/2M41	35	14,8	42	17,8	1270	640	970	510
3L-42HD	3/2	Hatz/2M41	42	16,4	51	20,2	1375	750	1030	580

Rated details at nominal conditions: 20 °C & 1013 mbar

DENO SERVICE AIR PACKAGE



SERVICE AIR

The DENO DPA series are air cooled, belt-driven, piston-type service air compressors. The compressors can be mounted on top of an air receiver and are ready for direct installation and start-up.

- Max. pressure 10 bar
- Max. ambient temperature 50 °C
- Deviating voltages and pressures upon request

Model	Qty Cyl./ Stages	50 Hz		60 Hz		Receiver Volume Liter	Length mm	Width mm	Height mm	Weight kg
		Capacity m ³ /hr	Required power kW	Capacity m ³ /hr	Required power kW					
DPA2	2/1	15	2,2	15	2,6	0	700	500	500	25
						50	850	400	750	40
						100	1050	500	900	80
DPA3	3/1	27	3,0	27	3,5	0	700	500	550	40
						100	1050	500	950	95
						250	1200	750	1150	145
DPA4	2/1	40	4,0	40	4,7	0	700	500	550	40
						100	1050	500	950	95
						270	1650	550	1000	180

Rated details at nominal conditions: 20 °C & 1013 mbar

DENO AIR DRYERS

REFRIGERATION

Water vapour in compressed air systems condensates to water when cooled. This condensation will reduce the efficiency and reliability of the compressed air application. Deno Compressors offers a wide range of refrigeration air dryers, which are the cost-effective solution for this problem.



- Max. pressure 50 bar
- Max. ambient temperature 55 °C
- Dew points between +3 °C and +7 °C
- Suitable for 50 & 60 Hz



ADSORPTION

Although the common refrigeration air dryers are excellent for providing dry compressed air at lower costs, they cannot achieve pressure dew points below +3°C, because the water vapour in the compressed air could freeze. Deno Compressors offers a wide range of adsorption air dryers, which are the technical solution for this problem.

- Max. pressure 16 bar
- Max. ambient temperature 55 °C
- Dew points at -20 °C, -40 °C and -70 °C
- Suitable for 50 & 60 Hz

DENO NITROGEN GENERATORS

MEMBRANE

The DENO nitrogen membrane generators have a capacity ranging from 50 m³/hr up to 3000 m³/hr, with a purity of up to 99,5% N₂. Quality of the inlet air is controlled by a carbon filter and a fine dust filter together with a heater ensuring an effective use of the membranes. The controls are very easy to operate. If required, remote controls for bridge and deck positions are available. The total nitrogen plant complies with the regulations of major Classification Societies.



- Max. working pressure 12,5 bar
- Max. ambient temperature 50 °C
- Standard voltage: 380~415 V/3 Ph/50 Hz - 440~480 V/3 Ph/60 Hz
- Deviating voltages and pressures upon request

PSA

Deno offers a wide range of PSA Nitrogen generators. The capacity ranges from 2.5 m³/hr up to 500 m³/hr for 95% purity. Our generators are capable to reach 99.9% purity. The generators are only delivered with Deno feed air compressors in combination with an air dryer for optimal production of Nitrogen gas.



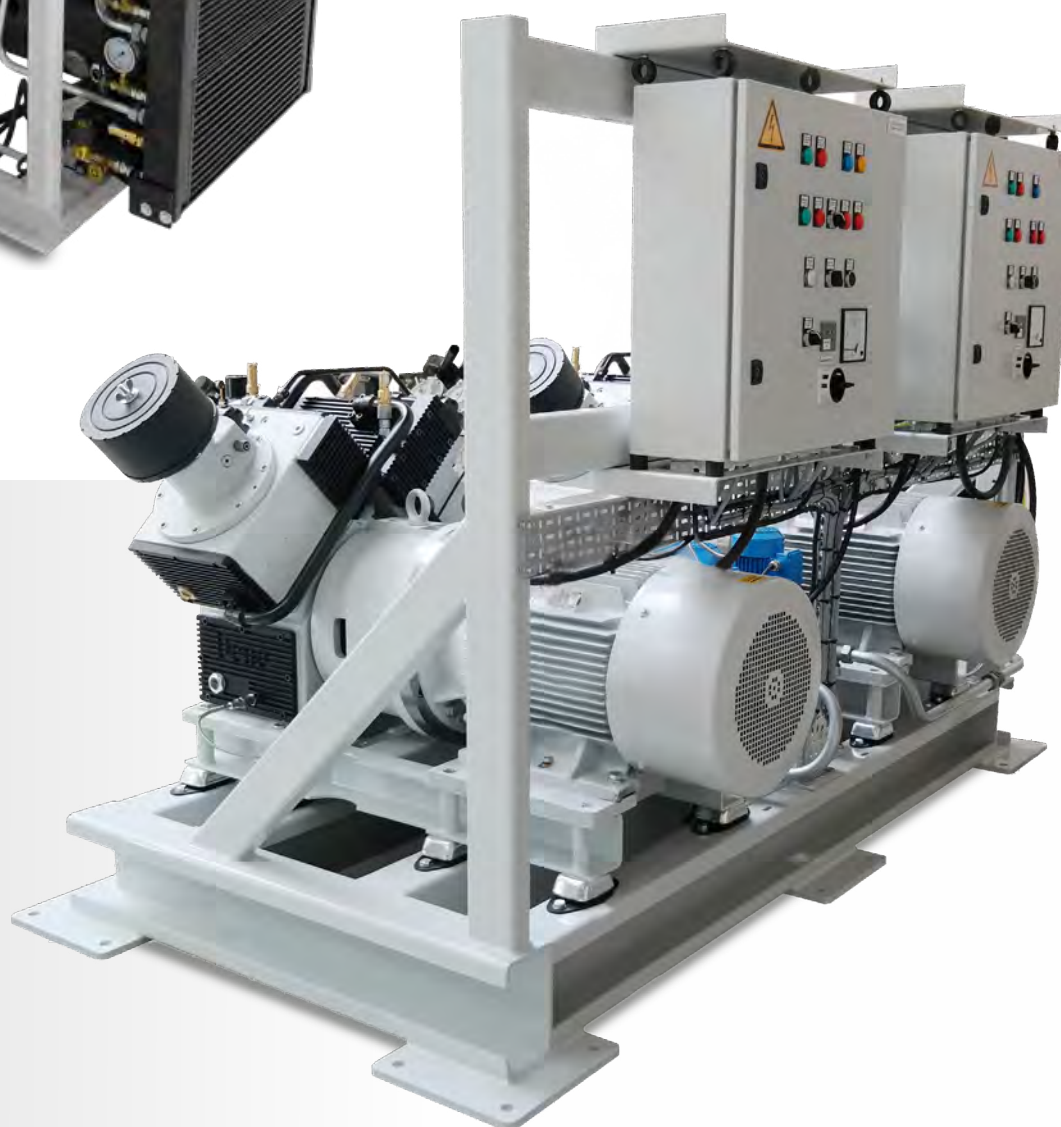
- Max. working pressure 8,5 bar
- Max. ambient temperature 50 °C
- Suitable for 50 & 60 Hz
- Deviating pressures upon request

DENO SKIDS & AUXILIARIES



SKIDS

The DENO Skids are available in a wide range of standard units as well as custom-build packages. Any configuration is available for air or water cooled compressors. Auxiliaries such as air dryers and air receivers can also be integrated.





AUXILIARIES

- Control cabinets
- Filters
- Pressure vessels
- Pressure reducers
- Separator systems

Marine Air Compressors
N₂ Generators



Original Deno Parts

Original Deno Parts

Original Deno Parts

Original Deno Parts



Handle with Care Handle with Care Handle with Care Handle with Care

Handle with Care Handle with Care Handle with Care

Handle with Care Handle with Care Handle with Care

DENO COMPRESSORS WORLDWIDE



Founded in 1918

Deno Compressors B.V.

van der Giessenweg 49
2921 LP Krimpen aan den IJssel
The Netherlands

Tel : +31 180 44 22 88
E-mail : info@denocomp.nl
www.denocomp.nl

ISO 9001 Certified
ISO 14001 Certified
ISO 45001 Certified